

The Amalfi



ELEVATION C



ELEVATION A



ELEVATION B

2,200 SQFT



VITALE HOMES

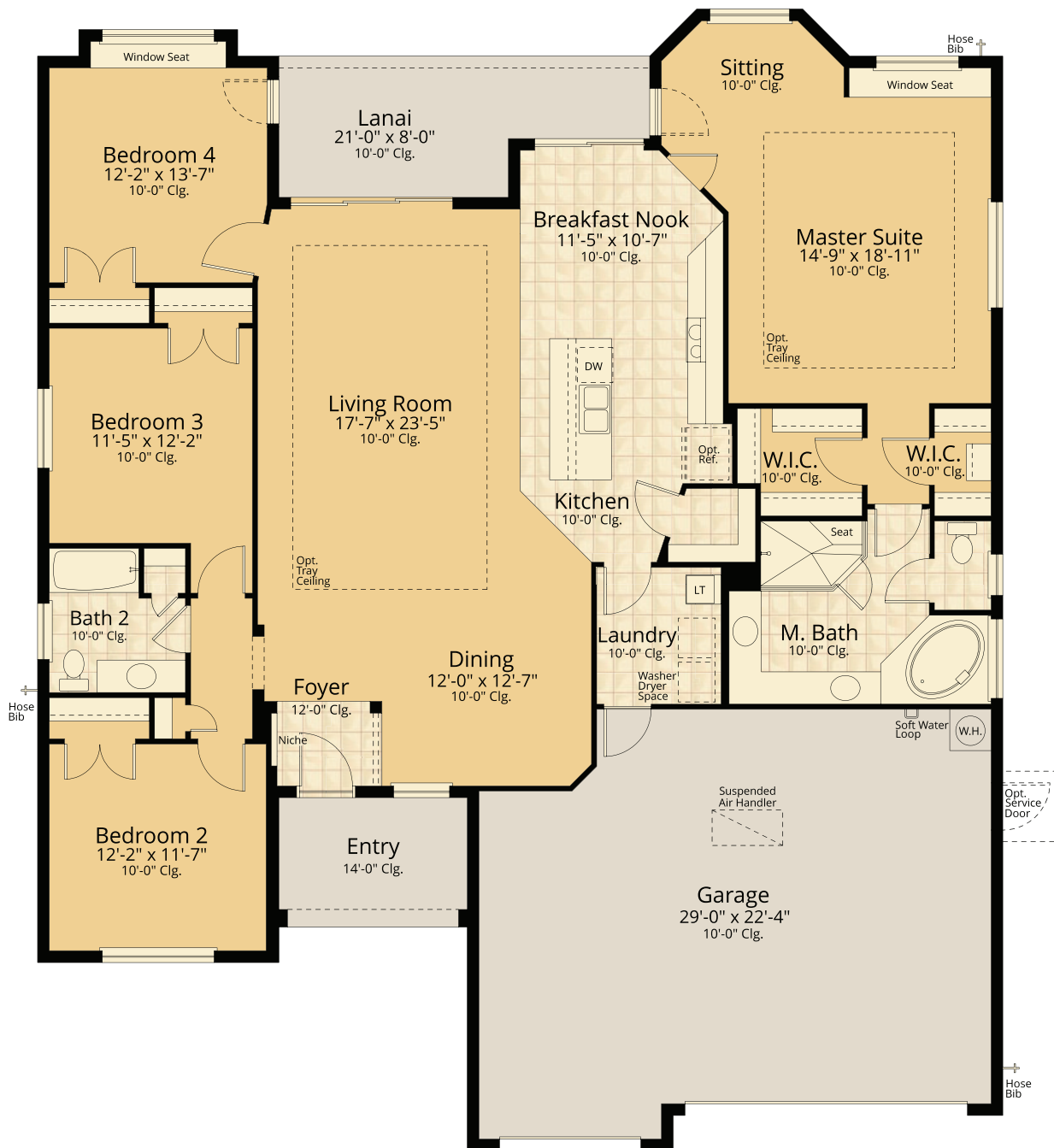
vitalehomes.com



VITALE HOMES

The Amalfi

3 bedroom + den • 2 bath • 3 car garage



Plans, prices, specifications, included features, available options, promotions, and incentives where applicable, are subject to change or substitution without notice. Artist's conceptual renderings, floorplans, site plans, site plan landscaping, and community amenities are shown for illustration only and are not intended to be an accurate representation. Features may vary per home and per community. Community amenities, specifications, plans, dimensions, and designs are subject to change or substitutions without notice. Refer to the recorded plat for accurate lot dimensions, setbacks, water, wetland and conservation areas, and easements. Model photography shown includes features that may be subject to change or substitution. All rights reserved. Not an offer to purchase where prohibited by law. Broker participation welcome. CBC1257646 11/19

VITALEHOMES.com

VITALE DIFFERENCE
a new way of living

LONG LIVE HAPPY HOMES™