

The Portofino



ELEVATION C



ELEVATION A



ELEVATION B

2,732 SQFT



VITALE HOMES

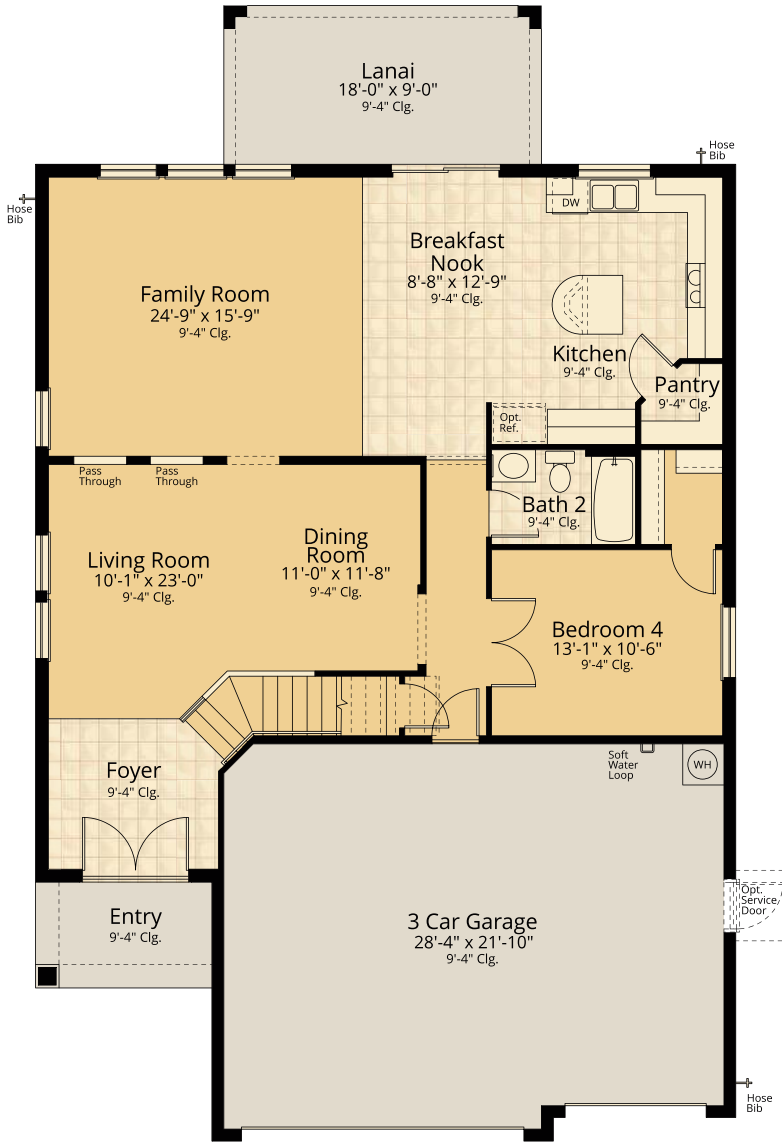
vitalehomes.com



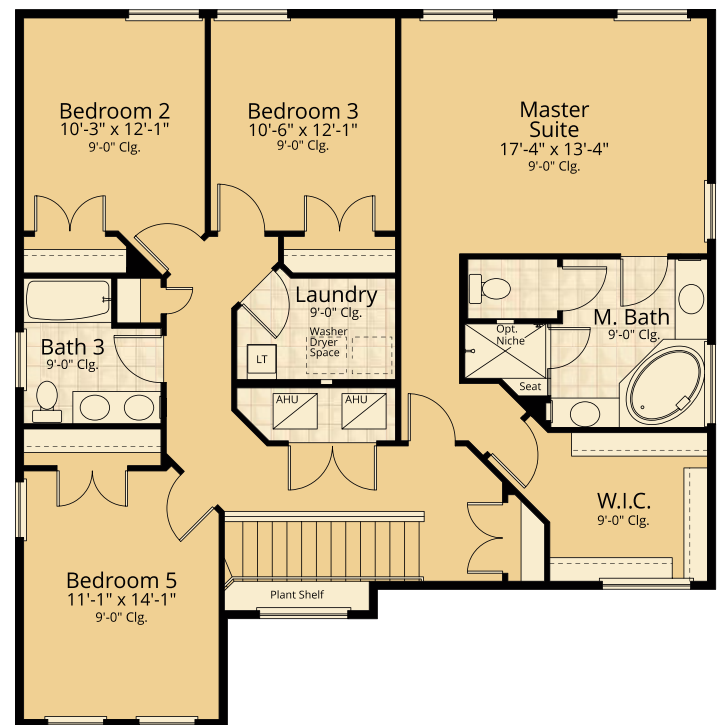
VITALE HOMES

The Portofino

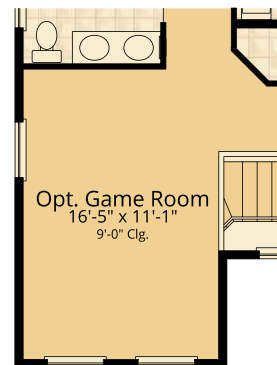
5 bedroom • 3 bath • 3 car garage



First Floor



Second Floor



Optional Game Room



Plans, prices, specifications, included features, available options, promotions, and incentives where applicable, are subject to change or substitution without notice. Artist's conceptual renderings, floorplans, site plans, site plan landscaping, and community amenities are shown for illustration only and are not intended to be an accurate representation. Features may vary per home and per community. Community amenities, specifications, plans, dimensions, and designs are subject to change or substitutions without notice. Refer to the recorded plat for accurate lot dimensions, setbacks, water, wetland and conservation areas, and easements. Model photography shown includes features that may be subject to change or substitution. All rights reserved. Not an offer to purchase where prohibited by law. Broker participation welcome. CBC1257646 1/21

VITALEHOMES.com

VITALE DIFFERENCE
a new way of living

LONG LIVE HAPPY HOMES